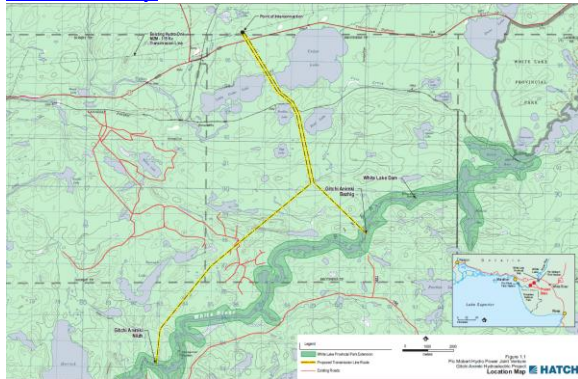


WHITE RIVER (GITCHI ANIMKI) HYDROELECTRIC GENERATING STATION PROJECT

Summary of Project

Pic Mobert Hydro Inc. (PMHI), a partnership which comprises the Pic Mobert First Nation and Regional Power Inc. is proposing to construct two hydroelectric power generating facilities on the White River in northwestern Ontario. The overall name of the Project will be the White River (Gitchi Animki) Hydroelectric Project. The two generating facilities will be approximately 12 km apart on the river. One facility (Gitchi Animki, Bezhig) will be located approximately 3.2 km downstream from the site of the existing White Lake Dam and the other (Gitchi Animki, Niizh) approximately 1.6 km downstream from Chicagonce Falls (see Location Map). The existing White Lake Dam will be decommissioned as part of the Project. The function of lake level and flood control will be carried out by the new Bezhig site. The facilities will have installed capacities of 8.9 MW (Bezhig) and 10 MW (Niizh), respectively.

Location Map



Major Project Construction Activities and Milestone Schedule

The following are major project construction activities that will take place during the construction of the White River (Gitchi Animki) Hydroelectric Project. Alongside them a timeline is indicated. A complete project schedule can be found on both project websites described below.

- Contractor Mobilization - August 12, 2013
- Diversion Start (Upper Site) – July 2, 2014
- Diversion Start (Lower Site) – June 30, 2014
- Dam Complete (Upper Site) – September 30, 2013
- Commissioning of Transmission Line – September 30, 2014

- Headpond Filling (Upper and Lower Sites) – October 1, 2014
- Dam Complete (Lower Site) – November 1, 2014
- Commissioning Finish (Upper Site) – March 2, 2015
- Commissioning Finish (Lower Site) – March 28, 2015
- Demobilization – March 27, 2015
- Removal of White Lake Dam – July

Key Contacts and Websites

As Regional Power Inc. and Pic Mobert First Nation are both Proponents on this project the following individuals are key contacts whom you may call for further information. A Toll Free Information Hotline has been set up for the project. You may call 1 (866) 311-1747 for updates on construction activities.

- Manuel Ariza (Project Manager – Regional Power Inc.): (905) 363-4200
- Norm Jaehrling (Pic Mobert First Nation – Executive Director): (807) 822-2134

Furthermore, information on the Project can be found on both Regional Power's and Pic Mobert's websites at www.regionalpower.com and www.picmobert.ca.

Safety and Emergency Response Information

A comprehensive Emergency Response Plan will be developed by the Construction Contractor and procedures put in place to deal diligently in the event that an incident were to occur. As such, the Plan will include, among other things, specific requirements and information relating to emergency contacts, directions to the nearest hospital(s), spill and fire control, emergency communications, emergency response procedures for a spill or fire, medical emergency procedures, and notification and reporting protocols. When prepared, this Emergency Response Plan will be available on the Project websites mentioned above. In the meantime for any information please contact Manuel Ariza, Project Manager of the Project (phone number above).

